

DUNNING

ENGINEERED FOR ATHLETES | DESIGNED FOR PLAYERS™

SUMMER / FALL | 2024



DUNNING



OFFICIAL UNIFORM
SUPPLIER OF THE
**2023 / 2024 U.S.
SOLHEIM CUP TEAM**

Together, Dunning and the LPGA, with input and guidance from Stacy Lewis, developed a uniform set that showcases both the spirit of the U.S. Team and the technical proficiency of Dunning, the most performance-driven and innovative brand in golf.

“Working with the Dunning team on designing our U.S. uniforms for 2023 and 2024 has been an incredible collaborative and interesting process... 2024 will bring an entirely new vision to our Solheim Cup uniforms.”

- Team Captain Stacy Lewis



All photos: Jeff Marsh / LPGA Photographer



DUNNING WOMENS

PROPRIETARY fabric engineering.

LONG-LASTING performance.

FEATURING COOLMAX®

Engineered materials and player-specific
technology only available in Dunning.



PERFORMANCE YARNS
FOR OPTIMAL STRETCH

UPF SUN PROTECTION

TECHNICAL FABRICS
FOR ELEVATED
PLAYABILITY

FUNCTIONAL TRIMS



MAUVE DESERT
MADE

D2F24K437

**ALANA VENTILATED
PERFORMANCE
SLEEVELESS POLO**

43% Coolmax®
45% Polyester
12% Spandex Mesh

Athletic fit, Engineered Reptile print with shaped stand collar, Flat knit interior detail, Platinum satin piping details, Metallic locking zipper with Dunning logo zipper pull, Tonal raised heatseal Dunning logo at bottom left hem

XS-XXL | DGW5944

COOLMAX



MAUVE DESERT
MADE

D2F24R446

**15-INCH ALANA
VENTILATED
PERFORMANCE SKORT**

43% Coolmax®
45% Polyester
12% Spandex

15-inch length, Engineered Reptile print, Asymmetrical laser-cut hem, Pleated front, Pull on with stretch waistband, Font slash pockets, Mesh short liner with ball pockets, Tonal Raised heatseal Dunning logo above back right pocket

XS-XXL | DGW5994

COOLMAX





MAUVE DESERT
MADE

D2F24K132

**ALANA VENTILATED
PERFORMANCE
QUARTER ZIP**

43% Coolmax®

45% Polyester

12% Spandex

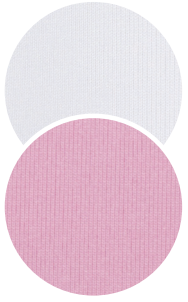
Midweight layer, Engineered Reptile print with platinum satin piping details at the interior, Open hem, Ergonomic solid contrast piecings, Reverse enamel wave locking zipper, Tonal raised heatseal

Dunning logo at lower left hem

XS-XXL | DGW5945

COOLMAX





WHITE
WHT

MAUVE DESERT
MADE

D2F24K434

**FREYA JERSEY
PERFORMANCE
SLEEVELESS POLO**

45% Coolmax®

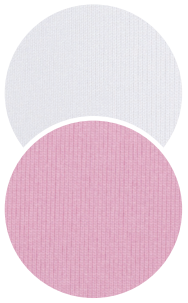
43% Polyester

12% Spandex Jersey

Athletic fit, Pleated tuxedo bib detail,
Tailored collar, Platinum satin piping details,
Metallic locking zipper with Dunning logo
zipper pull, Tonal raised heatseal Dunning
logo at bottom left hem

XS-XXL | DGW5944

COOLMAX®



WHITE
WHT

MAUVE DESERT
MADE

D2F24K447

**FREYA JERSEY
PERFORMANCE
SHORT-SLEEVE POLO**

45% Coolmax®

43% Polyester

12% Spandex Jersey

Athletic fit, Pleated tuxedo bib detail,
Tailored collar, Platinum satin piping details,
Metallic locking zipper with dunning logo
zipper pull, Tonal raised heatseal Dunning
logo at bottom left hem

XS-XXL | DGW5974

COOLMAX®





MAUVE DESERT
MADE

D2F24K430

**EILISH JERSEY
PERFORMANCE
SHORT-SLEEVE POLO**

45% Coolmax®
43% Polyester
12% Spandex

Athletic fit, Engineered Butterfly print with shaped stand collar, Birdseye flat knit with metallic detail, Platinum satin piping details, Metallic locking zipper with Dunning logo zipper pull, Tonal heatseal Dunning logo at bottom left hem

XS-XXL | DGW5974

COOLMAX



**WHITE /
MAUVE DESERT**
WMDS

D2F24K435

**MOIRA VENTILATED
PERFORMANCE
LONG-SLEEVE POLO**

43% Coolmax®
45% Polyester
12% Spandex Mesh

Athletic fit, Color blocked, Tailored collar with platinum satin piping details, Metallic locking zipper with Dunning logo zipper pull, Contrast raised heatseal Dunning logo at bottom left hem

XS-XXL | DGW5945

COOLMAX





NIGHT SKY
NTSK

D2F24K432

**RHONA VENTILATED
PERFORMANCE
SHORT-SLEEVE POLO**

43% Coolmax®

45% Polyester

12% Spandex Mesh Jersey

Athletic fit, Feather print, Shaped stand collar with flat knit interior details, Platinum satin piping details, Reverse metallic locking zipper with Dunning logo zipper pull, Tonal raised heatseal D logo at bottom left hem

XS-XXL | DGW5974

COOLMAX®



NIGHT SKY
NTSK

D2F24R444

**15-INCH RHONA
VENTILATED
PERFORMANCE SKORT**

43% Coolmax®

45% Polyester

12% Spandex Mesh

15-Inch length, Feather print, Circle skirt with laser-cut hem, Pull on with stretch waistband, Front slash pockets, On-seam back invisible zip pocket, Mesh short liner with ball pockets, Tonal raised heatseal Dunning logo below back right pocket

XS-XXL | DGW5994

COOLMAX®





NIGHT SKY
NTSK

D2F24K129

**RHONA VENTILATED
PERFORMANCE
QUARTER ZIP**

43% Coolmax®

45% Polyester

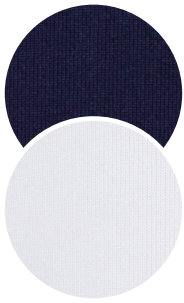
12% Spandex

Midweight layer, Feather print with platinum satin piping details at the interior, Open hem, Ergonomic solid contrast piecings, Reverse enamel wave locking zipper, Tonal raised heatseal Dunning logo at back neck

XS-XXL | DGW5945

COOLMAX





NIGHT SKY
NTSK

WHITE
WHT

D2F24K434

**FREYA JERSEY
PERFORMANCE
SLEEVELESS POLO**

45% Coolmax®

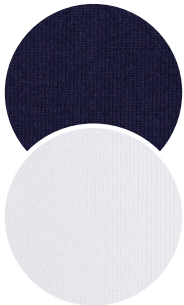
43% Polyester

12% Spandex Jersey

Athletic fit, Pleated tuxedo bib detail,
Tailored collar, Platinum satin piping details,
Metallic locking zipper with dunning logo
zipper pull, Tonal raised heatseal Dunning
logo at bottom left hem

XS-XXL | DGW5944

COOLMAX



NIGHT SKY
NTSK

WHITE
WHT

D2F24K447

**FREYA JERSEY
PERFORMANCE
SHORT-SLEEVE POLO**

45% Coolmax®

43% Polyester

12% Spandex Jersey

Athletic fit, Pleated tuxedo bib detail,
Tailored collar, Platinum satin piping details,
Metallic locking zipper with dunning logo
zipper pull, Tonal raised heatseal Dunning
logo at bottom left hem

XS-XXL | DGW5974

COOLMAX





**WHITE /
MAUVE DESERT**
WMDS



**WHITE /
NIGHT SKY**
WHNS

D2F24K458

**EILISH
SLEEVELESS JERSEY
PERFORMANCE POLO**

45% Coolmax®
43% Polyester
12% Spandex

Athletic fit, Engineered Butterfly print with shaped stand collar, Birdseye flat knit with metallic detail, Metallic locking zipper with Dunning logo zipper pull, Tonal raised heat-seal Dunning logo at bottom left hem

XS-XXL | DGW5944

COOLMAX



**WHITE /
NIGHT SKY**
WHNS

D2F24K435

**MOIRA VENTILATED
PERFORMANCE
LONG-SLEEVE POLO**

43% Coolmax®
45% Polyester
12% Spandex Mesh

Athletic fit, Color blocked, Tailored collar with platinum satin piping details, Metallic locking zipper with Dunning logo zipper pull, Contrast raised heatseal Dunning logo at bottom left hem

XS-XXL | DGW5945

COOLMAX





D2S22K271

**PLAYER JERSEY
PERFORMANCE
SLEEVELESS POLO**

45% Coolmax®
43% Polyester
4% Spandex

Athletic fit, Platinum satin piping details,
5-button placket with foil-rim logo
buttons, Tonal raised heatseal D logo at
bottom left hem

XS-XXL | DGW5973

COOLMAX



D | ESSENTIALS

D2S22K270

**PLAYER JERSEY
PERFORMANCE
SHORT-SLEEVE POLO**

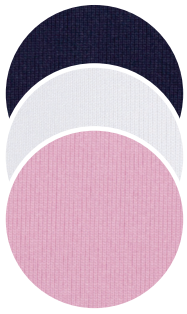
45% Coolmax®
43% Polyester
4% Spandex

Athletic fit, Platinum satin piping details,
5-button placket with foil-rim logo buttons,
Tonal raised heatseal D logo at bottom left hem.

XS-XXL | DGW5993

COOLMAX





NIGHT SKY
NTSK

WHITE
WHT

MAUVE DESERT
MADE

D2F24K434

**FREYA JERSEY
PERFORMANCE
SLEEVELESS POLO**

45% Coolmax®

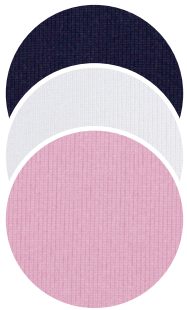
43% Polyester

12% Spandex Jersey

Athletic fit, Pleated tuxedo bib detail,
Tailored collar, Platinum satin piping details,
Metallic locking zipper with dunning logo
zipper pull, Tonal raised heatseal Dunning
logo at bottom left hem

XS-XXL | DGW5944

COOLMAX



NIGHT SKY
NTSK

WHITE
WHT

MAUVE DESERT
MADE

D2F24K447

**FREYA JERSEY
PERFORMANCE
SHORT-SLEEVE POLO**

45% Coolmax®

43% Polyester

12% Spandex Jersey

Athletic fit, Pleated tuxedo bib detail,
Tailored collar, Platinum satin piping details,
Metallic locking zipper with dunning logo
zipper pull, Tonal raised heatseal Dunning
logo at bottom left hem

XS-XXL | DGW5974

COOLMAX





**NIGHT SKY
HEATHER**
NSKH

**MICROCHIP
HEATHER**
MICH

**MAUVE DESERT
HEATHER**
MADH

**BLACK
HEATHER**
BLHE

D2F24K438

**PENROSE 2.0
PERFORMANCE HOODIE**

100% Polyester Fleece

Heavyweight layer, Banded hem, Sculpted hood,
Platinum satin piping details, Locking zipper with
diamond cut teeth, Zipper sleeve pocket with tonal
raised heatseal Dunning logo

XS-XXL | DGW5996



4-WAY
STRETCH



SOFT
HAND







D2S23K284

SKYLAR FULL ZIP

89% Polyester
11% Spandex

Midweight layer, Athletic fit, Bomber collar,
Heathered texture fabric, Platinum satin piping
details, Metallic locking zipper with D logo zipper
pull, Zipper guard, 2 front zipper pockets, Tonal
raised heatseal D logo at back neck

XS-XXL | DGW5995



MOISTURE
WICKING



D | ESSENTIALS

D2F23K420

**PLAYER JERSEY
PERFORMANCE
QUARTER ZIP**

91% Polyester
9% Spandex

Midweight layer, Open hem, Platinum satin piping
details, Metallic locking zipper, Zipper guard, Tonal
raised heatseal D logo at back neck

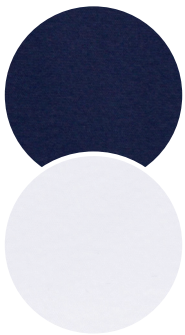
XS-XXL | DGW5994

COOLMAX | PLAYER



4-WAY
STRETCH MOISTURE
WICKING UPF 50+





NIGHT SKY
NTSK

WHITE
WHT

D2F24V451

BLAKE INSULATED PERFORMANCE VEST

88% Nylon
12% Spandex

Cire shell with 60 gram Primaloft gold insulation,
Waist shaping rib detail with contrast zipper tape,
tonal raised heatseal Dunning logo at back waist

XS-XXL | DGW59411



4-WAY
STRETCH

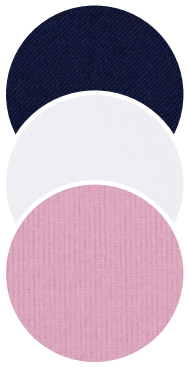


MOISTURE
WICKING



PRIMALOFT





NIGHT SKY
NTSK

WHITE
WHT

MAUVE DESERT
MADE

D | ESSENTIALS

D2F24R443

**16-INCH PLAYER FIT JERSEY
PERFORMANCE SKORT**

43% Coolmax®

45% Polyester

12% Spandex

16-inch length, Pleated frame side panel, Invisible
CB zip closure, Front slash pockets, Mesh short liner
with ball pockets, Tonal raised heatseal Dunning logo
above right pocket

XS-XXL | DGW5994

COOLMAX **PLAYER**



4-WAY STRETCH MOISTURE WICKING UPF 50+







HALO
HALO

BLACK
BLK

WHITE
WHT

D2S23R295

**17-INCH PLAYER JERSEY
PERFORMANCE SKORT**

43% Coolmax®

45% Polyester

12% Spandex Mesh Jersey

17-inch length, Pull on stretch waistband, Platinum satin piping details, Side back pleats, Mesh Short liner with ball pockets, Tonal raised heatseal Dunning

D logo above right back pocket

XS-XXL | DGW5994

COOLMAX **PLAYER**





HALO
HALO

BLACK
BLK

WHITE
WHT

D2S23R295-15

**15-INCH PLAYER JERSEY
PERFORMANCE SKORT**

43% Coolmax®

45% Polyester

12% Spandex Jersey

15-inch length, Pull on stretch waistband, Platinum
satin piping details, Side back pleats, Mesh Short
liner with ball pockets, Tonal raised heatseal Dunning

D logo above right back pocket

XS-XXL | DGW5994

COOLMAX **PLAYER**



4-WAY
STRETCH



MOISTURE
WICKING



UPF 50+





HALO
HALO

BLACK
BLK

WHITE
WHT

D | ESSENTIALS

D2F23H299

**17-INCH PLAYER FIT
STRETCH PERFORMANCE
SHORT**

88% Polyester
12% Spandex

17-inch length, Continental front pockets, Invisible zipper on left side, Notch at side seam hem, Back patch pockets, Tonal raised heatseal D logo at back right pocket

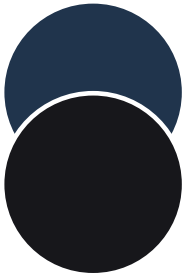
XS-XXL | DGW5994

COOLMAX | PLAYER



4-WAY STRETCH MOISTURE WICKING UPF 50+





HALO
HALO

BLACK
BLK

D | ESSENTIALS

D2F22P292

**PLAYER FIT STRETCH
PERFORMANCE PANT**

88% Polyester

12% Spandex

29.5-inch length, Continental front pockets,
Invisible zipper on left side, Ankle-length with
tapered leg, Back western pockets, Tonal raised
heatseal D logo back right pocket

XS-XXL | DGW5945

PLAYER



4-WAY
STRETCH



MOISTURE
WICKING



UPF 50+
UPF 50+





HALO
HALO

BLACK
BLK

WHITE
WHT

D2F23K410

**PLAYER VENTILATED
SUN PROTECTION
PERFORMANCE SHRUG**

43% Coolmax®

45% Polyester

12% Spandex Mesh

Underarm gusset for Player-specific fit.

Platinum satin piping details. Tonal raised

heatseal D logo at back neck

XS/S, M/L, XL/XXL | DGW5992

COOLMAX **PLAYER**



4-WAY STRETCH MOISTURE WICKING UPF 50+



